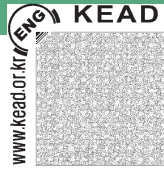


The Value of Togetherness: Promoting Employment of People with Disabilities



“We wish there was a suitable employment model for hiring people with disabilities”

Case 1. University specializing in Education and Medical Services
 #Customized_Training #New_Job_Roles_Utilizing_IoT #Employment_Model

Process Identifying suitable roles that meet corporate needs and designing a customized recruitment process

- Step 1** Form a taskforce for the employment of people with disabilities in collaboration with KEAD and related agencies
- Step 2** Develop customized jobs in line with the Fourth Industrial Revolution
- Step 3** Build a pool of job applicants with the requisite skills

Impact

<p>1</p> <p>In 2024, the employment rate for people with disabilities doubled compared to 2022</p> <p>82 new hires with disabilities</p>	<p>2</p> <p>Identification of new job roles utilizing IoT technology</p> <p>Identified 8 suitable job roles for people with disabilities</p>	<p>3</p> <p>Promoting a Culture of Diversity and Inclusion in Employment</p> <p>Compliance with mandatory employment quotas and setting an example for the industry through best practices</p>
---	---	---

In manufacturing, there are few roles suitable for people with disabilities

Case 2. Semiconductor & LCD materials Manufacturer
 #Employment_Model #Benchmarking # Standardized_Workplace_Environment

Process Acquire know-how through employment model analysis and benchmarking against other companies

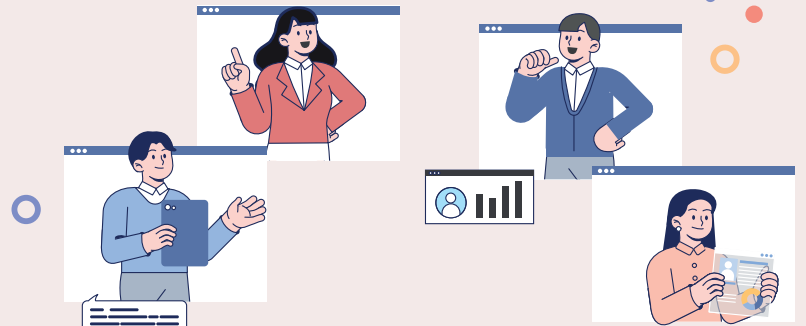
- Step 1** Promote the establishment of a subsidiary-type standardized workplace for people with disabilities
- Step 2** Conduct bakery job training in collaboration with the KEAD
- Step 3** Implement support programs to ensure high retention, such as specialized counseling systems and a mentoring programs

Impact

<p>1</p> <p>Establishment of a subsidiary-type standardized workplace for people with disabilities</p> <p>Employment consulting for people with disabilities, plus site visits and advisory support from relevant organizations</p>	<p>2</p> <p>Achieved over 100% of the mandatory employment quota for people with disabilities through subsidiary establishment and job development</p> <p>Hired 20 new employees with disabilities</p>	<p>3</p> <p>Zero turnover and 60% higher productivity through a comprehensive support system</p> <p>Support programs to ensure stable retention, including specialized counseling and mentoring</p>
--	---	--



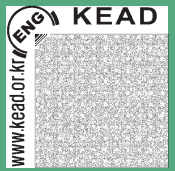
We provide optimal solutions for disability employment through organizational analysis



2026 Guide to Disability Employment Consulting

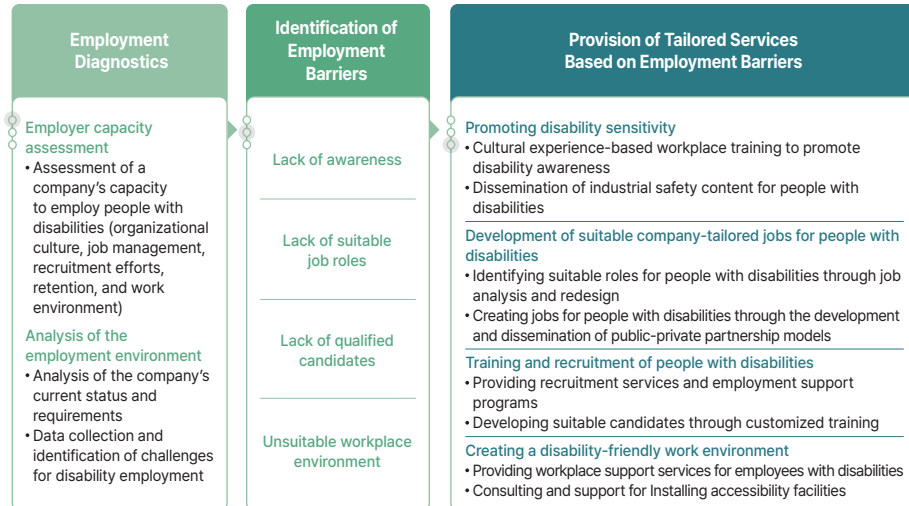


Designing your future, building inclusive jobs for people with disabilities.



What is Disability Employment Consulting

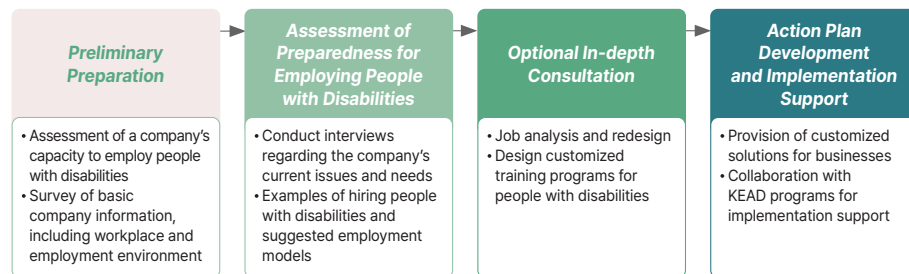
Analyzing employment conditions, identifying barriers, providing tailored consulting solutions.



Eligibility

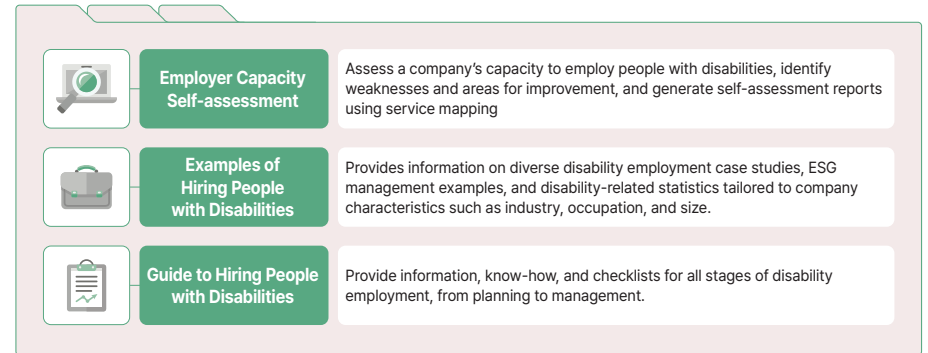
Employers in the government, public, or private sector who wish to hire people with disabilities may apply for the service free of charge

Process

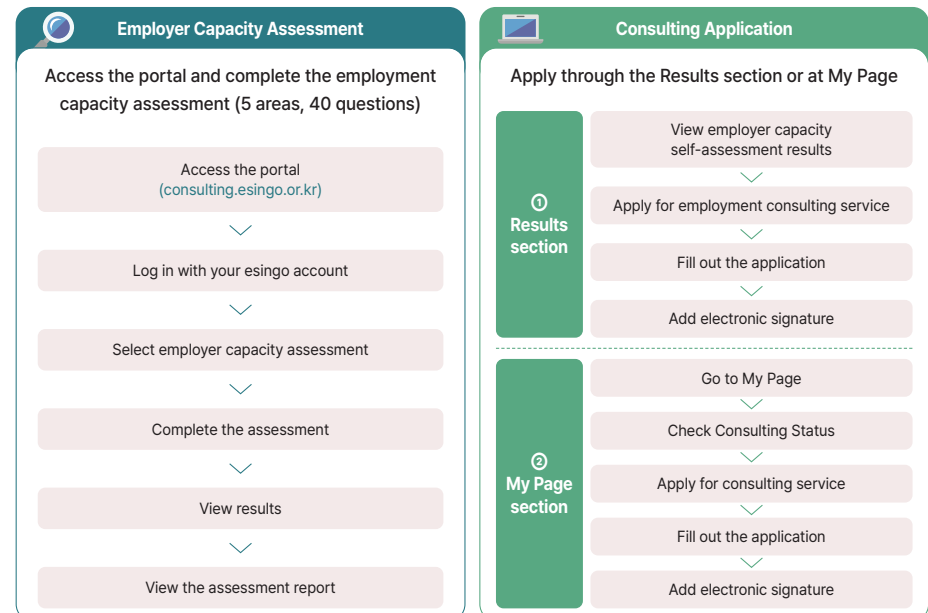


Consulting Portal for Disability Employment

This is an online support site where organizations can assess their own capacity for disability employment and access customized employment information based on that assessment (consulting.esingo.or.kr).



How to Apply for Disability Employment Consulting



Inquiries

Korea Employment Agency for Persons with Disabilities (KEAD) Headquarters and Affiliated Agencies

☎ 1588-1519